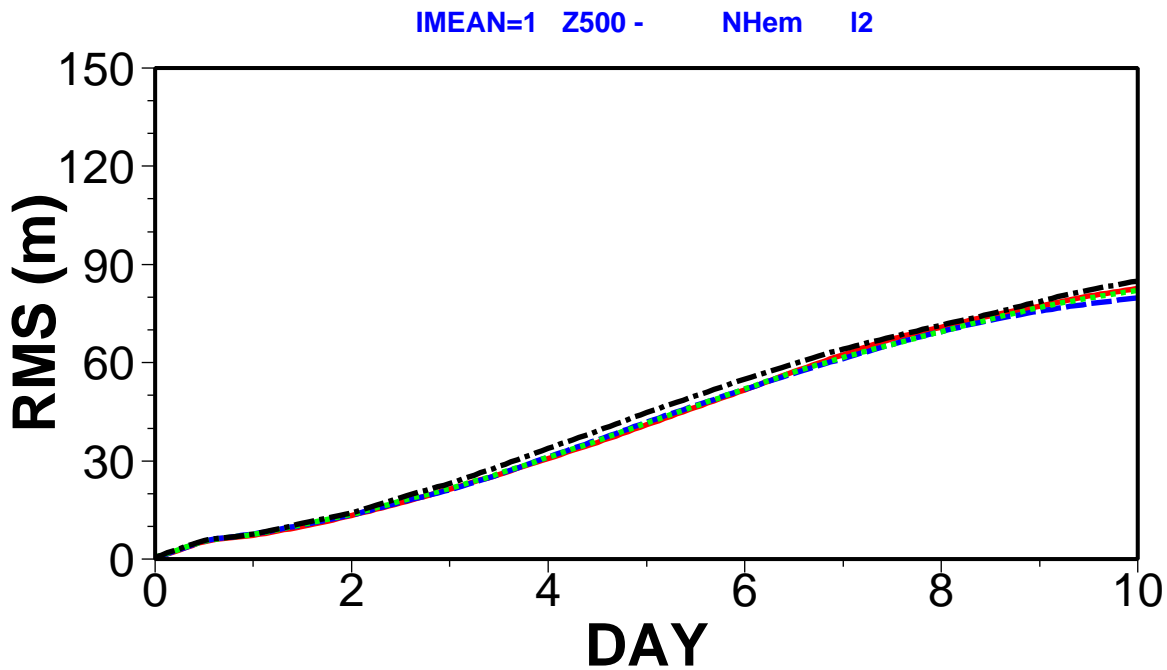
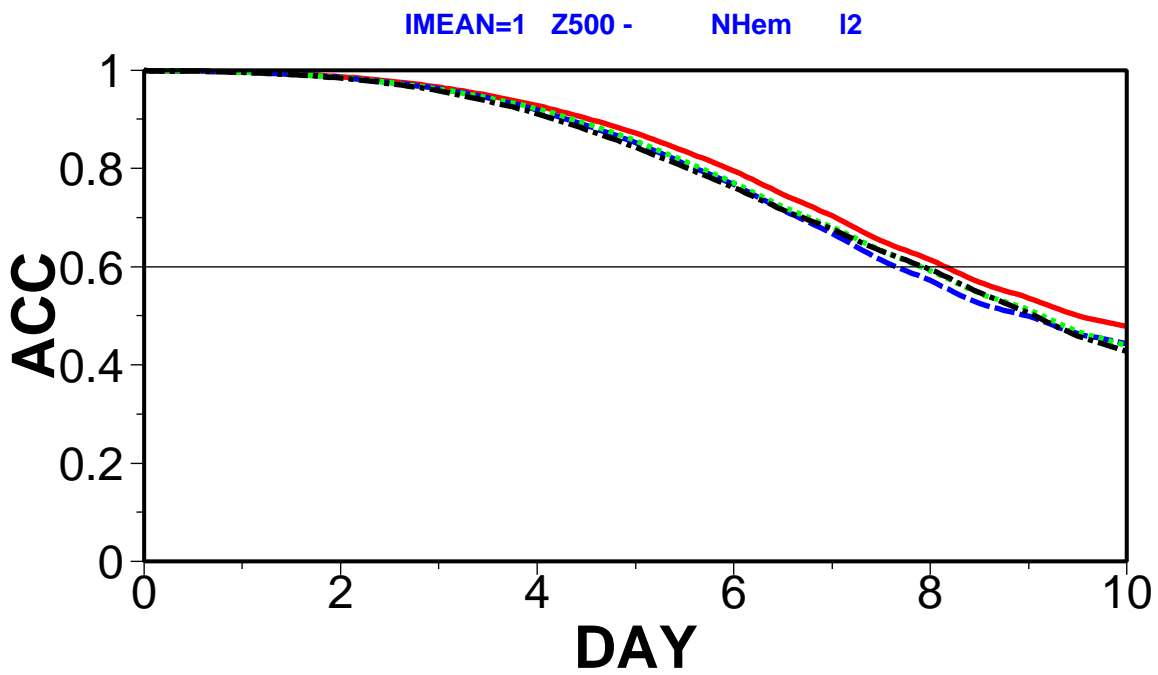


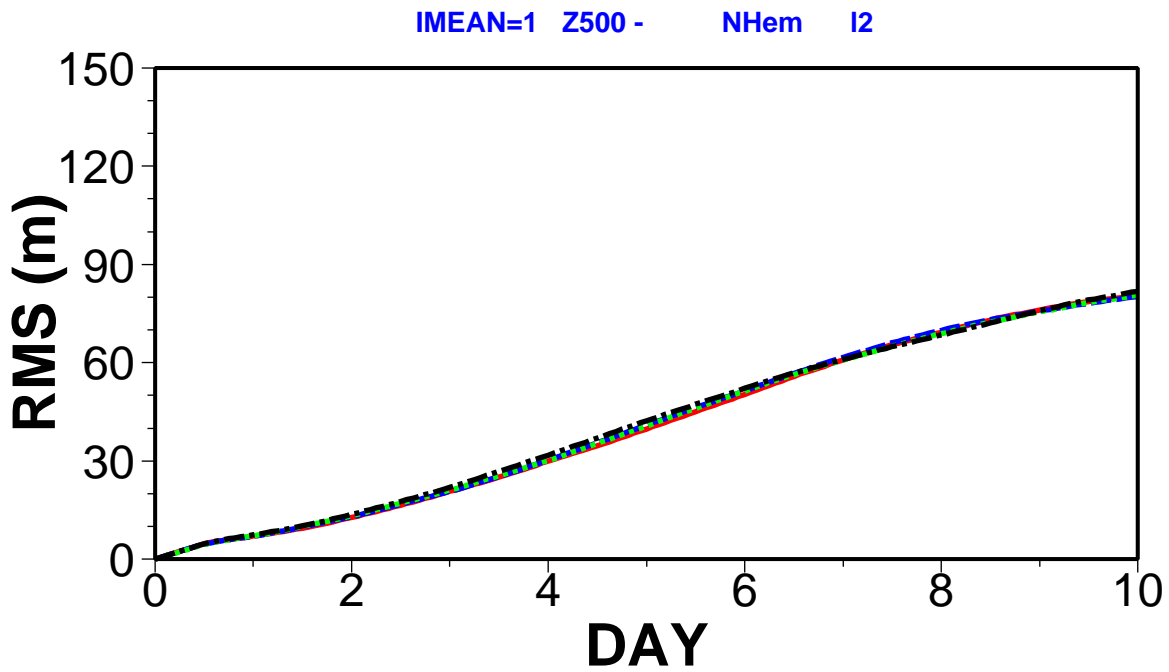
SOLID RED: skill C(d) 20060501 89
 DASH BLUE: skill C(d) 20050501 89
 DOT GREEN: skill C(d) 20040501 89
 CH-DAS BLACK: skill C(d) 20030501 89



SOLID RED: error C(d) 20060501 89
 DASH BLUE: error C(d) 20050501 89
 DOT GREEN: error C(d) 20040501 89
 CH-DAS BLACK: error C(d) 20030501 89

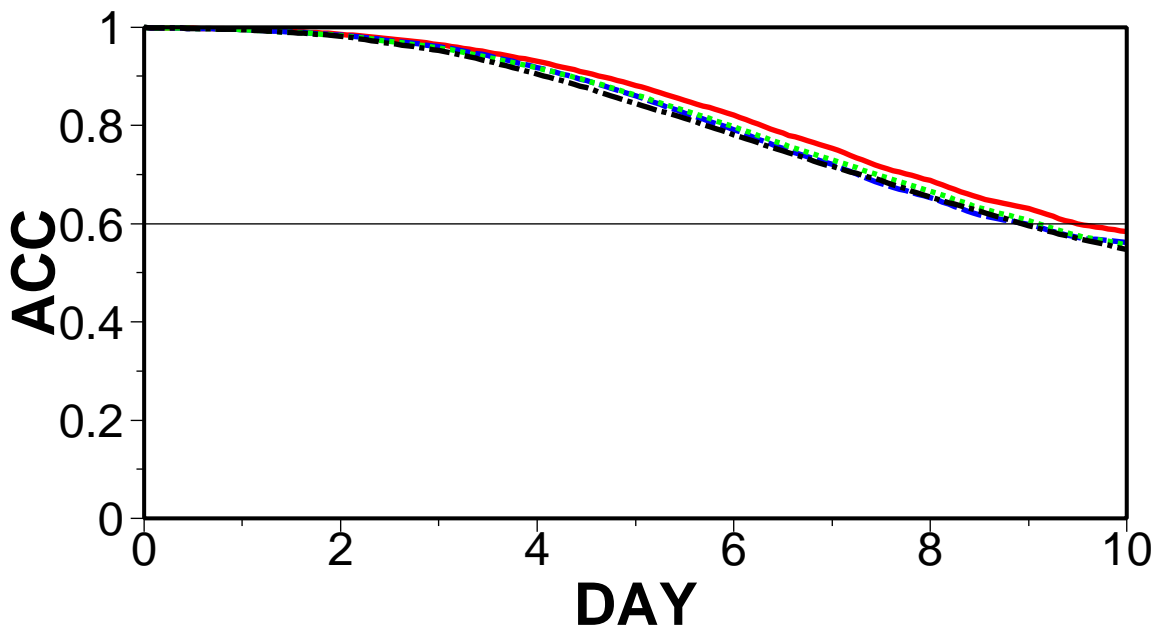


SOLID RED: skill HRES 20060501 89
DASH BLUE: skill HRES 20050501 89
DOT GREEN: skill HRES 20040501 89
CH-DAS BLACK: skill HRES 20030501 89



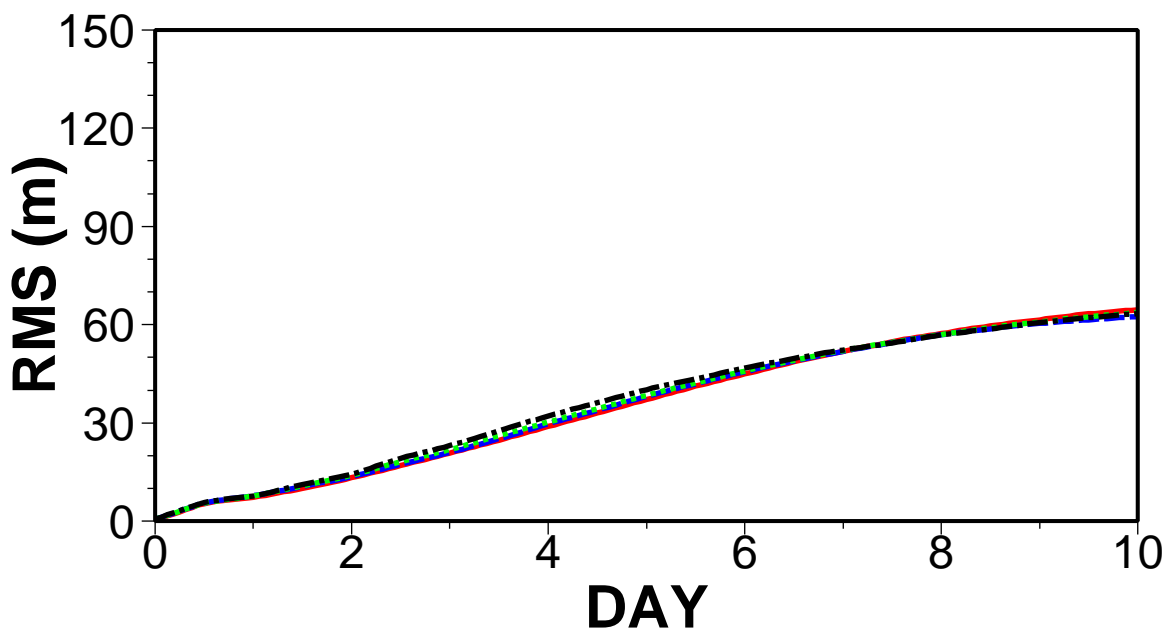
SOLID RED: error HRES 20060501 89
DASH BLUE: error HRES 20050501 89
DOT GREEN: error HRES 20040501 89
CH-DAS BLACK: error HRES 20030501 89

IMEAN=1 Z500 - NHem I2



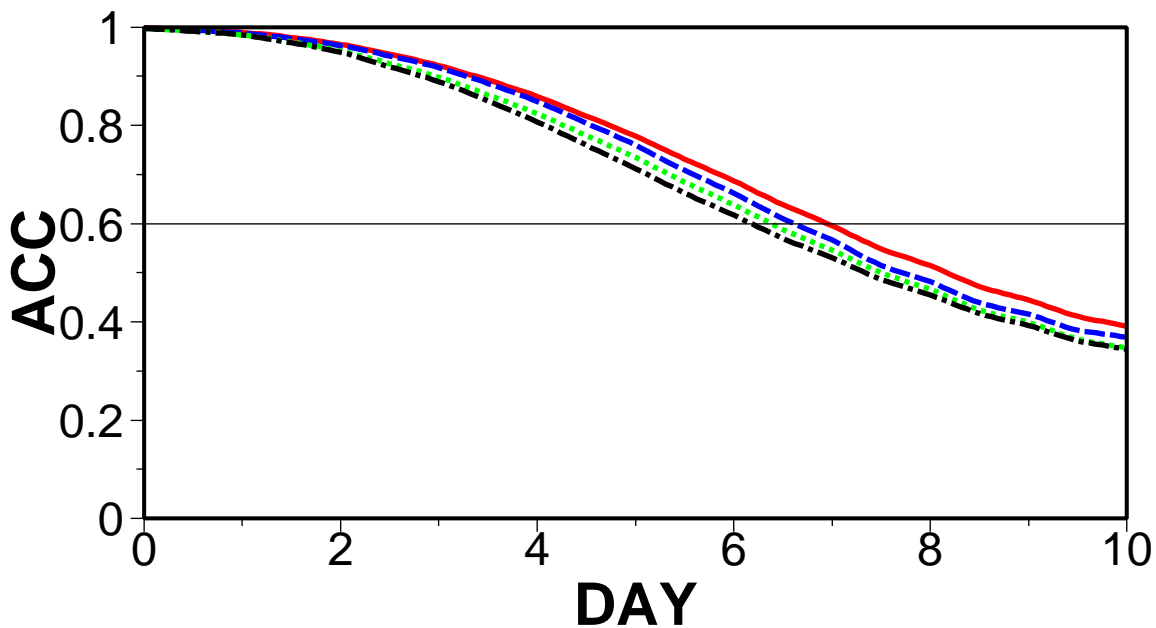
SOLID RED: skill E_M 20060501 89
DASH BLUE: skill E_M 20050501 89
DOT GREEN: skill E_M 20040501 89
CH-DAS BLACK: skill E_M 20030501 89

IMEAN=1 Z500 - NHem I2



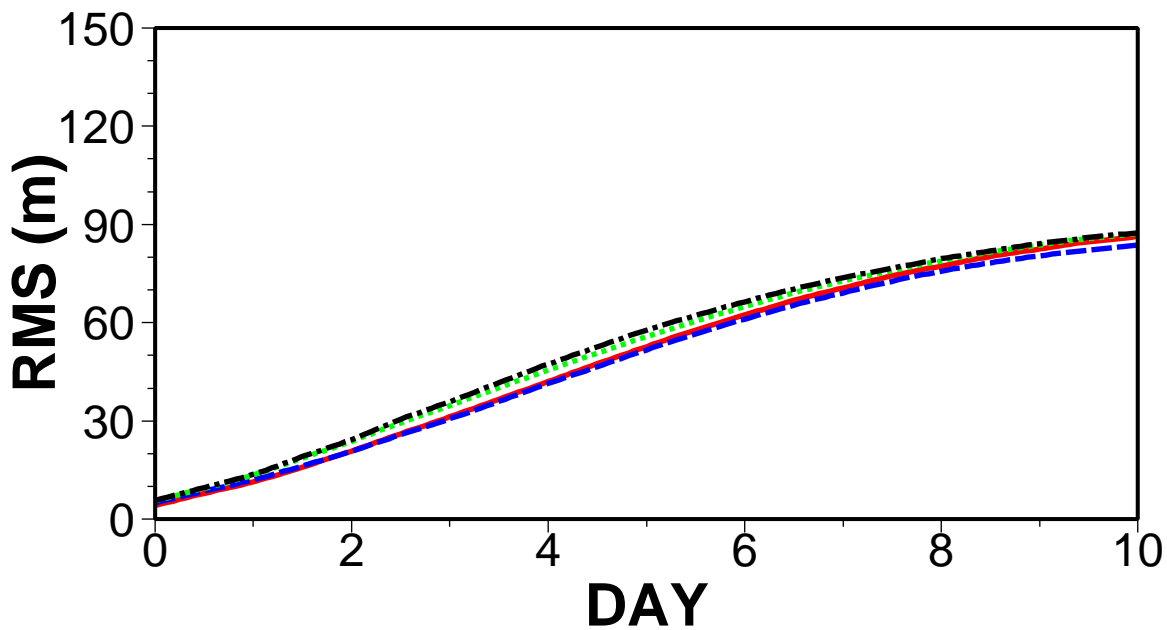
SOLID RED: error E_M 20060501 89
DASH BLUE: error E_M 20050501 89
DOT GREEN: error E_M 20040501 89
CH-DAS BLACK: error E_M 20030501 89

IMEAN=1 Z500 - NHem I2



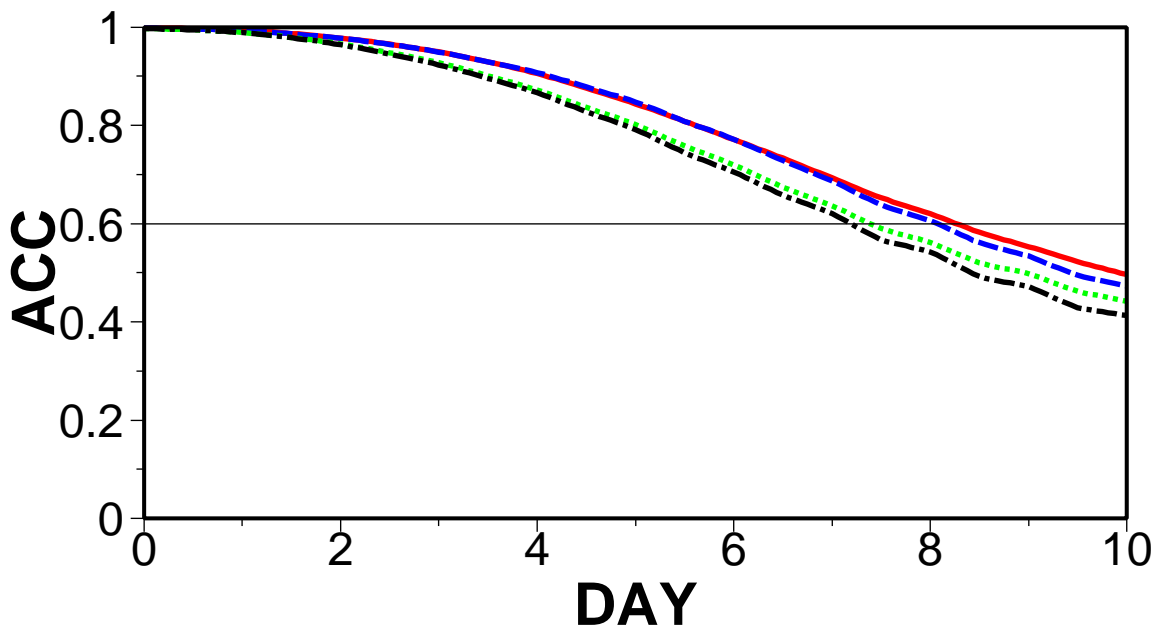
SOLID RED: mean skill 20060501 89
DASH BLUE: mean skill 20050501 89
DOT GREEN: mean skill 20040501 89
CH-DAS BLACK: mean skill 20030501 89

IMEAN=1 Z500 - NHem I2



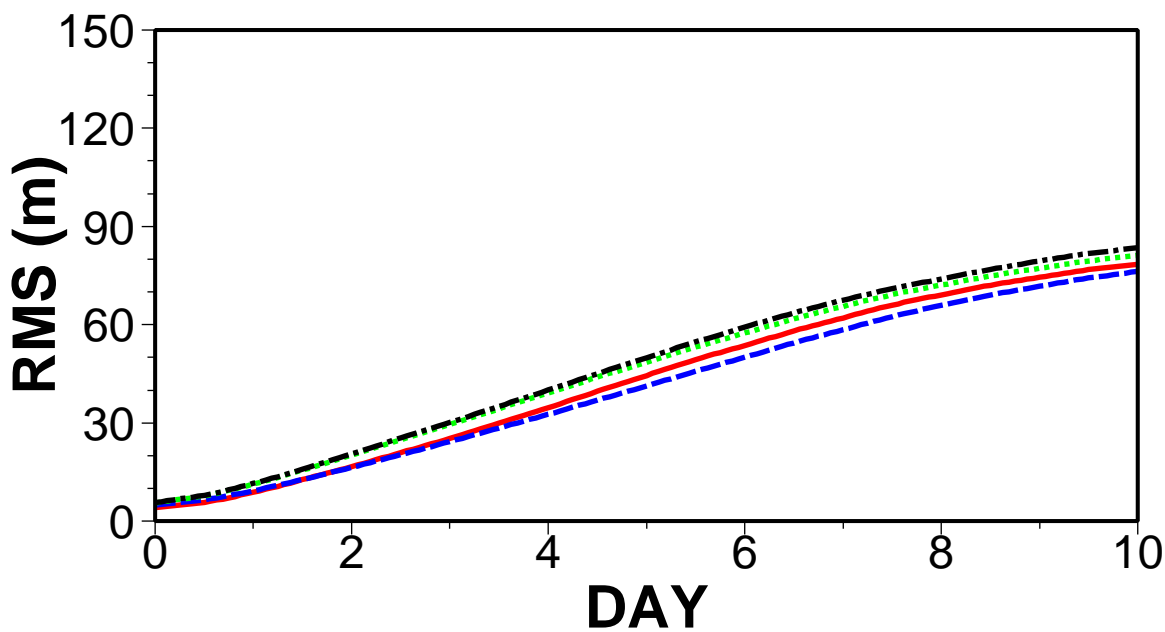
SOLID RED: mean error 20060501 89
DASH BLUE: mean error 20050501 89
DOT GREEN: mean error 20040501 89
CH-DAS BLACK: mean error 20030501 89

IMEAN=1 Z500 - NHem I2



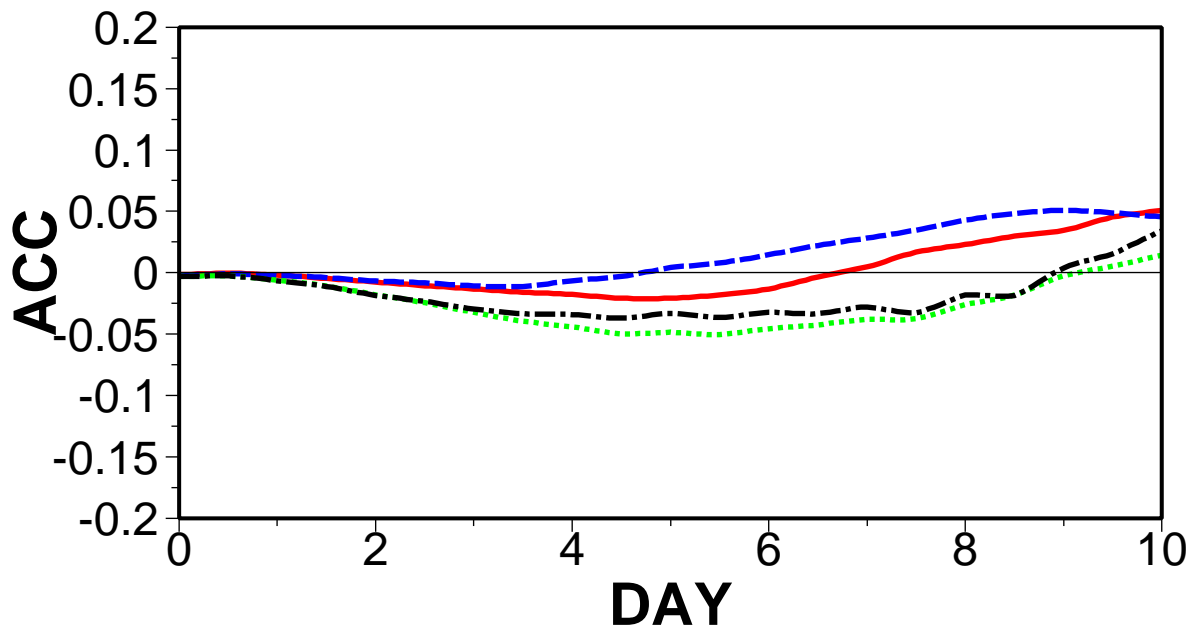
SOLID RED: M_SP C(d) 20060501 89
DASH BLUE: M_SP C(d) 20050501 89
DOT GREEN: M_SP C(d) 20040501 89
CH-DAS BLACK: M_SP C(d) 20030501 89

IMEAN=1 Z500 - NHem I2



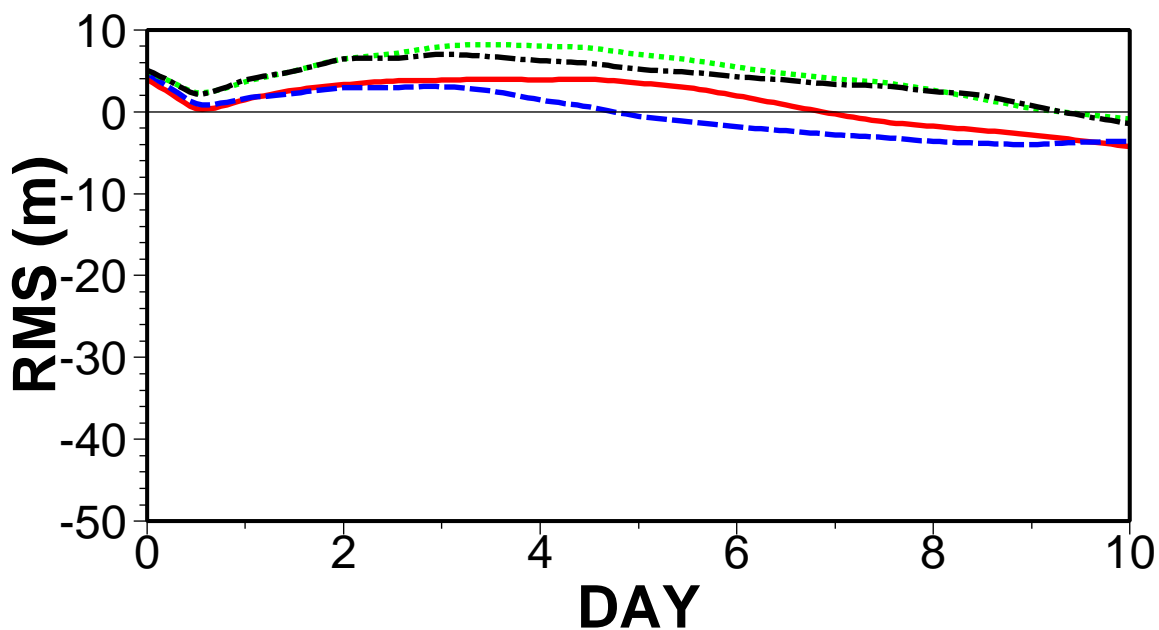
SOLID RED: M_SP C(d) 20060501 89
DASH BLUE: M_SP C(d) 20050501 89
DOT GREEN: M_SP C(d) 20040501 89
CH-DAS BLACK: M_SP C(d) 20030501 89

IMEAN=1 Z500 - NHem I2



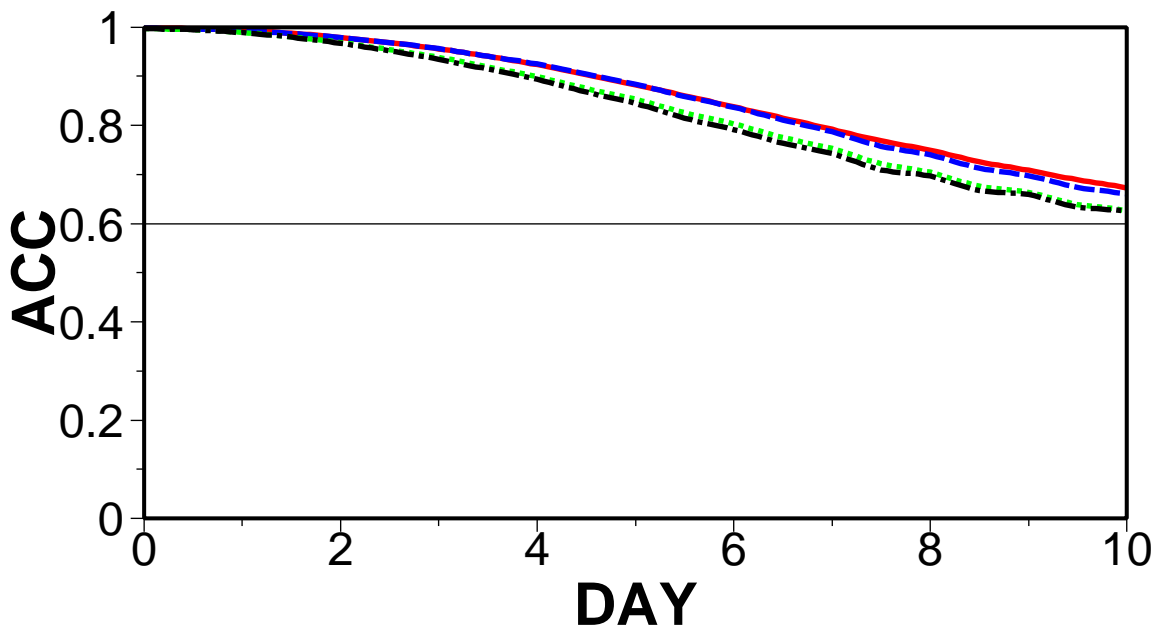
SOLID RED: [M_SP C(d)]-sk[C(d)] 20060501
DASH BLUE: [M_SP C(d)]-sk[C(d)] 20050501
DOT GREEN: [M_SP C(d)]-sk[C(d)] 20040501
CH-DASH BLACK: [M_SP C(d)]-sk[C(d)] 20030501

IMEAN=1 Z500 - NHem I2



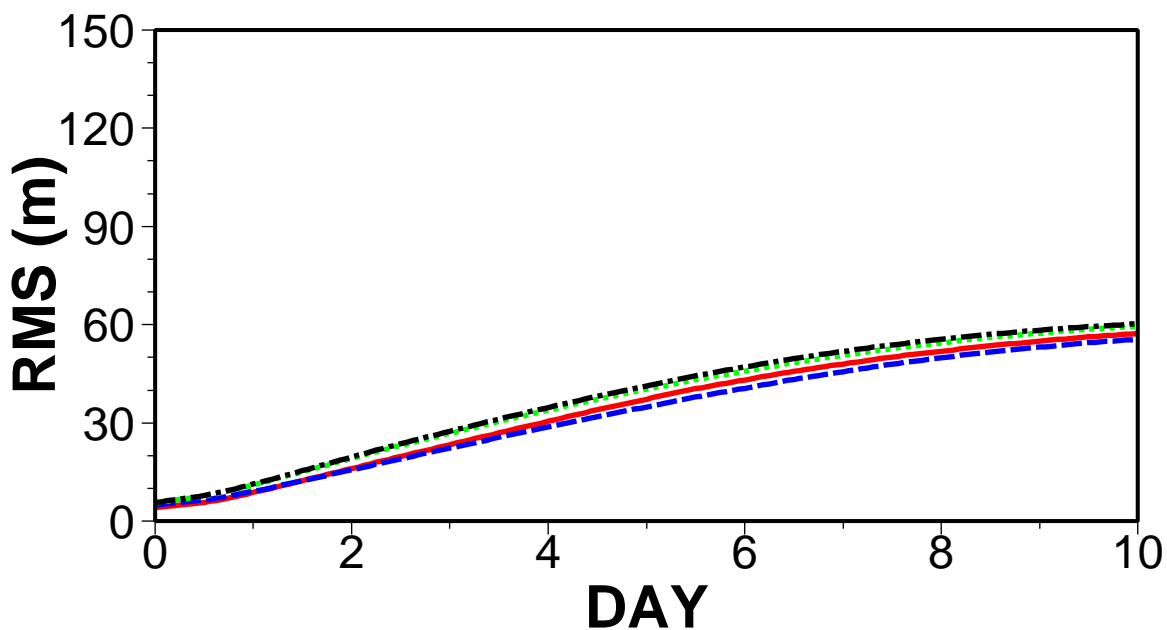
SOLID RED: [M_SP C(d)]-er[C(d)] 20060501
DASH BLUE: [M_SP C(d)]-er[C(d)] 20050501
DOT GREEN: [M_SP C(d)]-er[C(d)] 20040501
CH-DASH BLACK: [M_SP C(d)]-er[C(d)] 20030501

IMEAN=1 Z500 - NHem I2



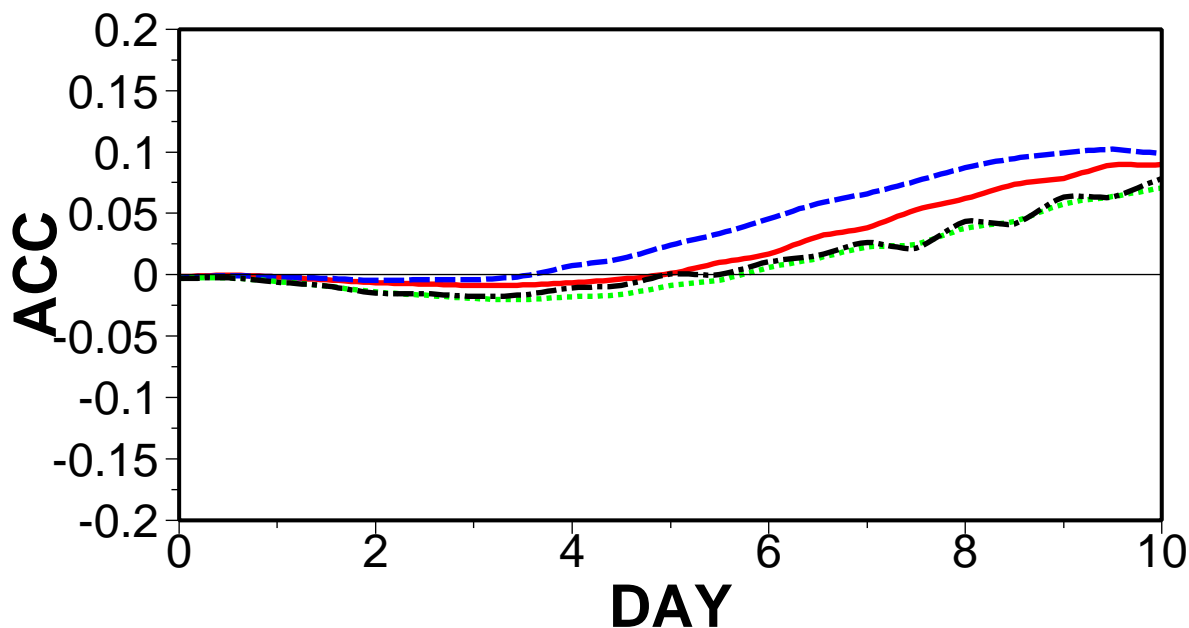
SOLID RED: M_SP E_M(d) 20060501
DASH BLUE: M_SP E_M(d) 20050501
DOT GREEN: M_SP E_M(d) 20040501
CH-DAS BLACK: M_SP E_M(d) 20030501

IMEAN=1 Z500 - NHem I2



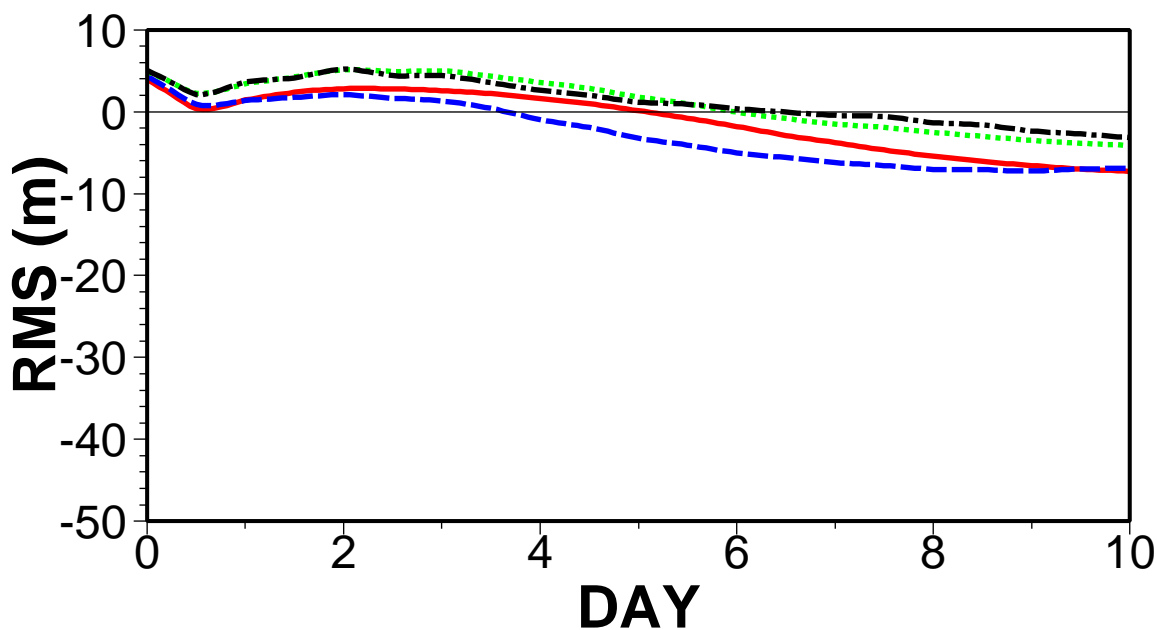
SOLID RED: M_SP E_M(d) 20060501
DASH BLUE: M_SP E_M(d) 20050501
DOT GREEN: M_SP E_M(d) 20040501
CH-DAS BLACK: M_SP E_M(d) 20030501

IMEAN=1 Z500 - NHem I2



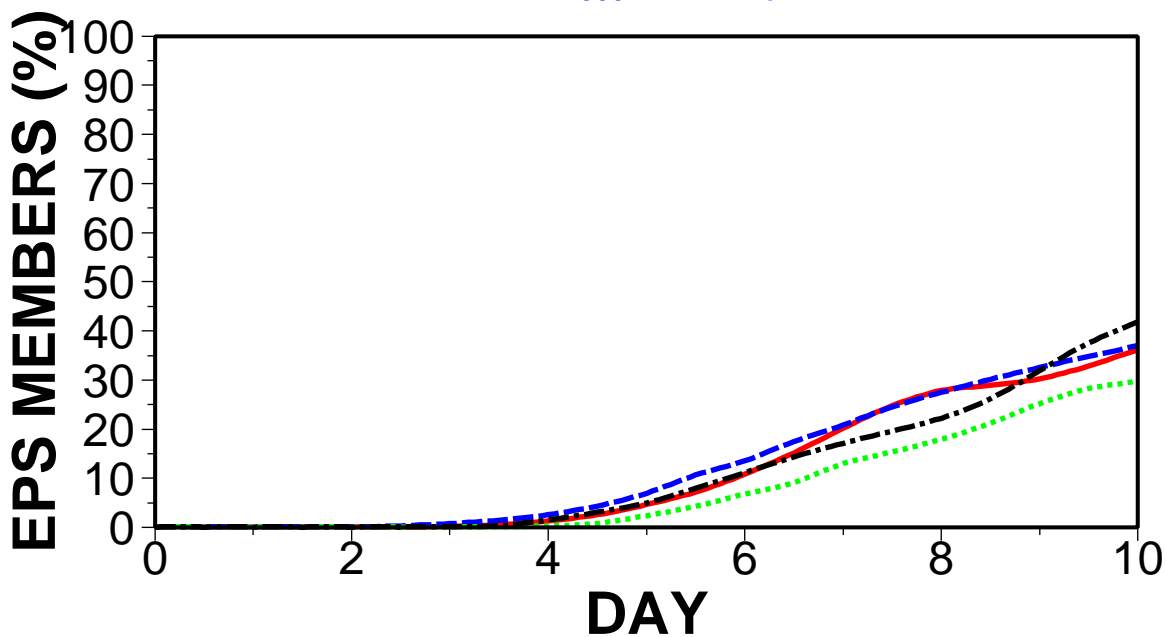
SOLID RED: [M_SP E_M(d)]-sk[E_M(d)] 20060501
DASH BLUE: [M_SP E_M(d)]-sk[E_M(d)] 20050501
DOT GREEN: [M_SP E_M(d)]-sk[E_M(d)] 20040501
CH-DASH BLACK: [M_SP E_M(d)]-sk[E_M(d)] 20030501

IMEAN=1 Z500 - NHem I2



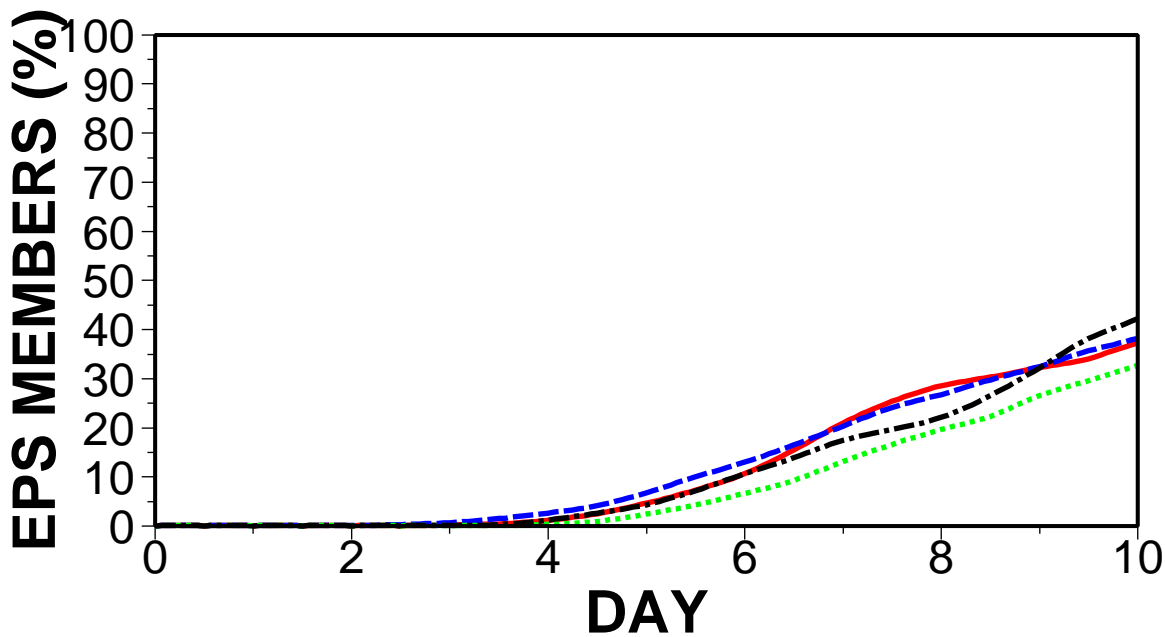
SOLID RED: [M_SP E_M(d)]-er[E_M(d)] 20060501
DASH BLUE: [M_SP E_M(d)]-er[E_M(d)] 20050501
DOT GREEN: [M_SP E_M(d)]-er[E_M(d)] 20040501
CH-DAS BLACK: [M_SP E_M(d)]-er[E_M(d)] 20030501

IMEAN=1 Z500 - NHem I2

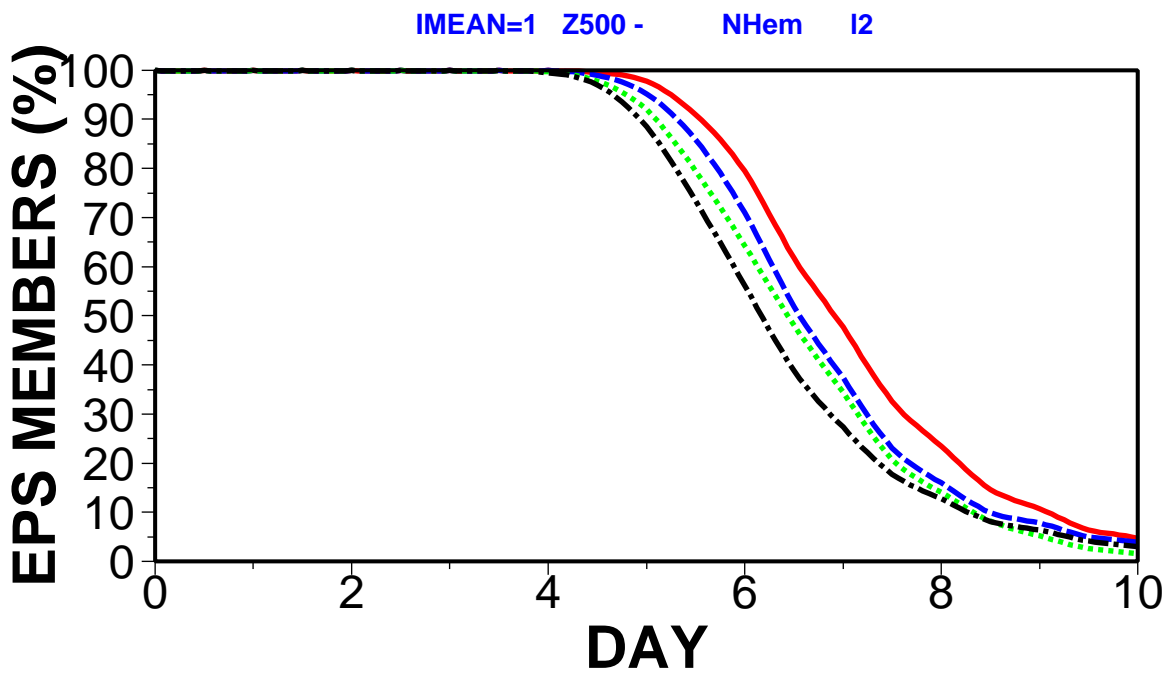


SOLID RED: %p with sk(p)=>sk(c) 20060501
DASH BLUE: %p with sk(p)=>sk(c) 20050501
DOT GREEN: %p with sk(p)=>sk(c) 20040501
CH-DAS BLACK: %p with sk(p)=>sk(c) 20030501

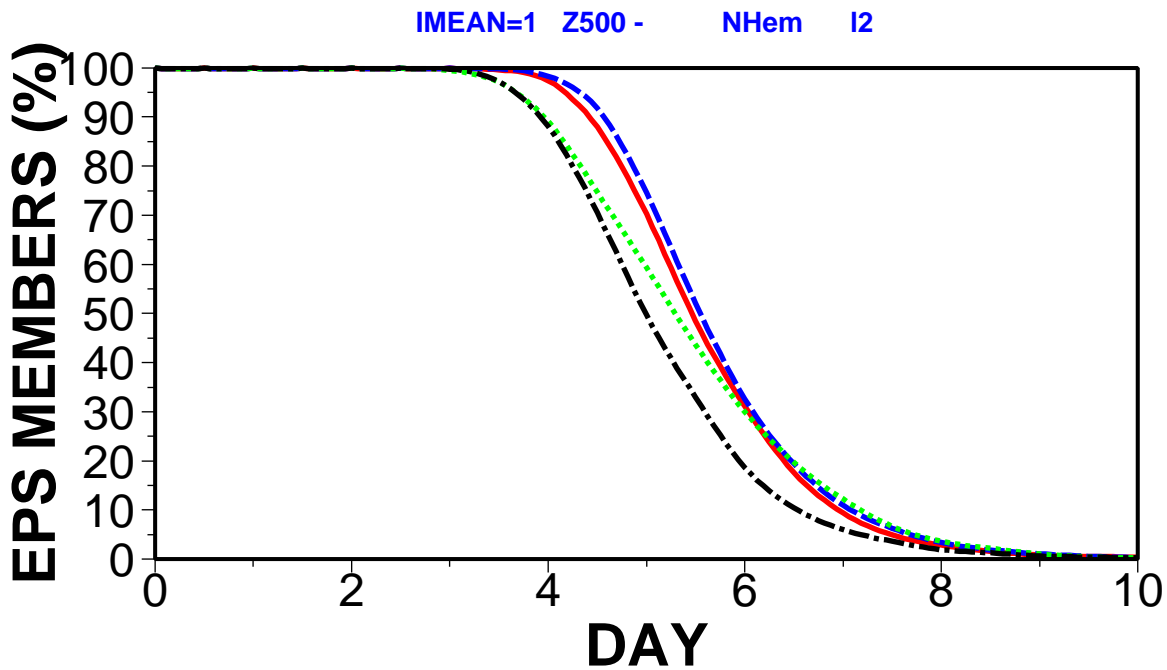
IMEAN=1 Z500 - NHem I2



SOLID RED: %p with er(p)<=er(c) 20060501
DASH BLUE: %p with er(p)<=er(c) 20050501
DOT GREEN: %p with er(p)<=er(c) 20040501
CH-DAS BLACK: %p with er(p)<=er(c) 20030501

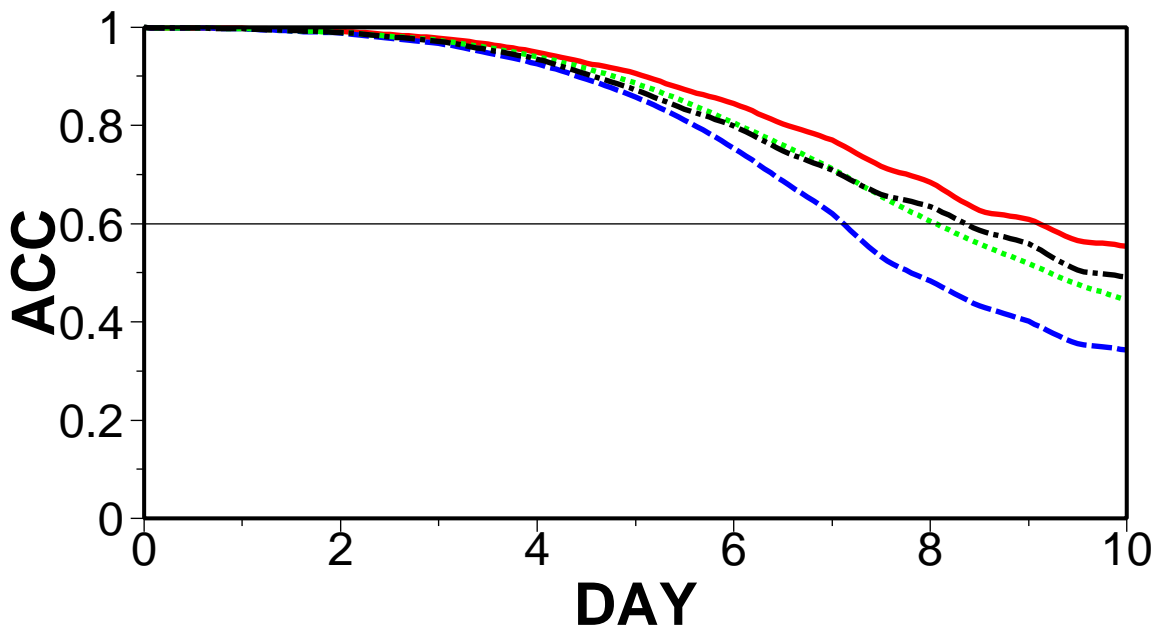


SOLID RED: %p with sk>0.6 20060501
DASH BLUE: %p with sk>0.6 20050501
DOT GREEN: %p with sk>0.6 20040501
CH-DAS BLACK: %p with sk>0.6 20030501



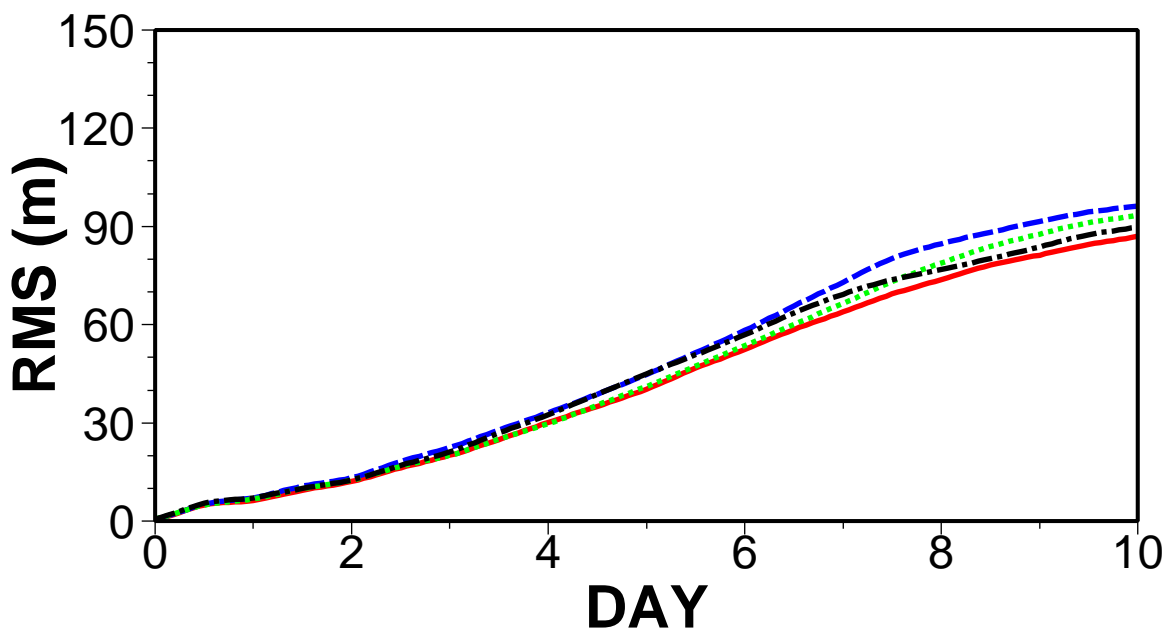
SOLID RED: %p with er<56m 20060501
DASH BLUE: %p with er<56m 20050501
DOT GREEN: %p with er<56m 20040501
CH-DAS BLACK: %p with er<56m 20030501

IMEAN=1 Z500 - Europe I2



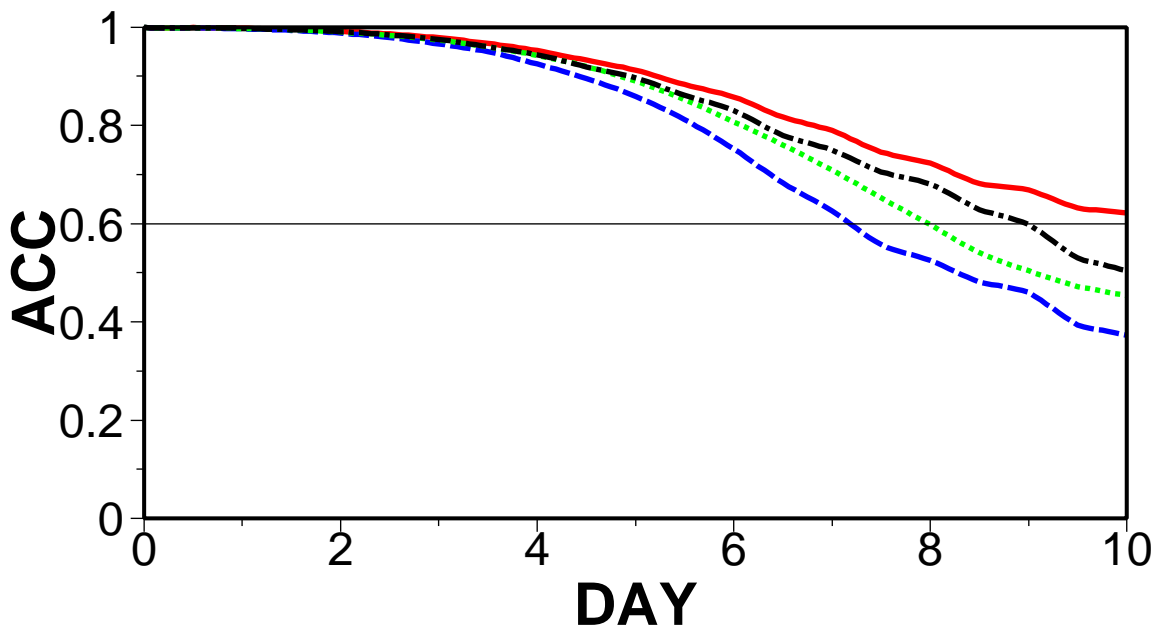
SOLID RED: skill C(d) 20060501 89
DASH BLUE: skill C(d) 20050501 89
DOT GREEN: skill C(d) 20040501 89
CH-DAS BLACK: skill C(d) 20030501 89

IMEAN=1 Z500 - Europe I2



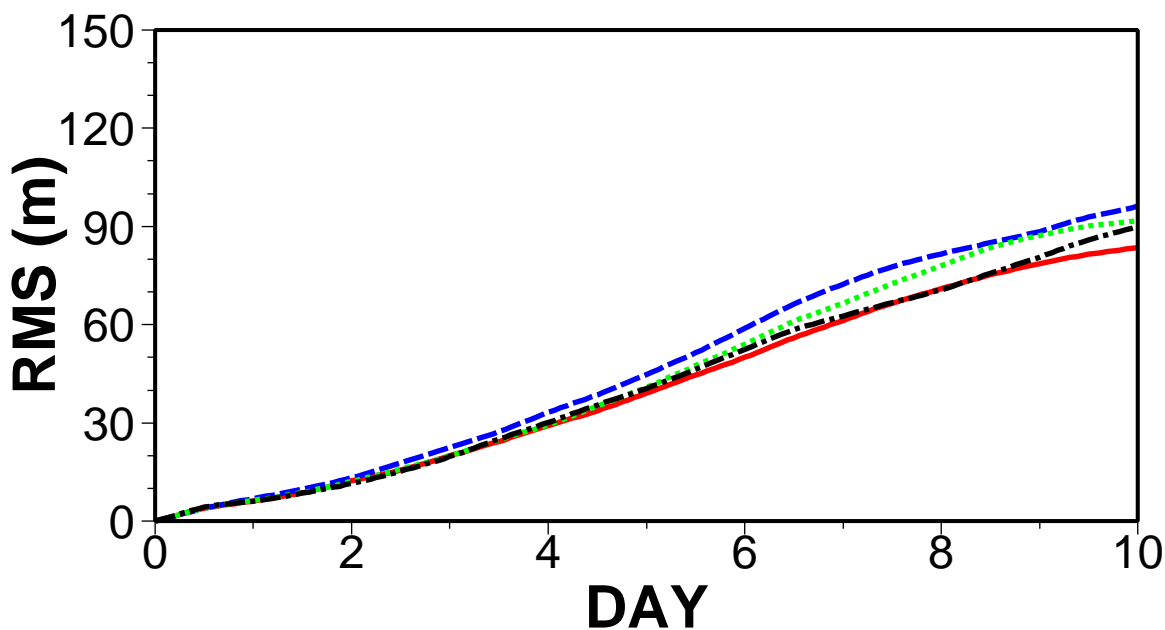
SOLID RED: error C(d) 20060501 89
DASH BLUE: error C(d) 20050501 89
DOT GREEN: error C(d) 20040501 89
CH-DAS BLACK: error C(d) 20030501 89

IMEAN=1 Z500 - Europe I2

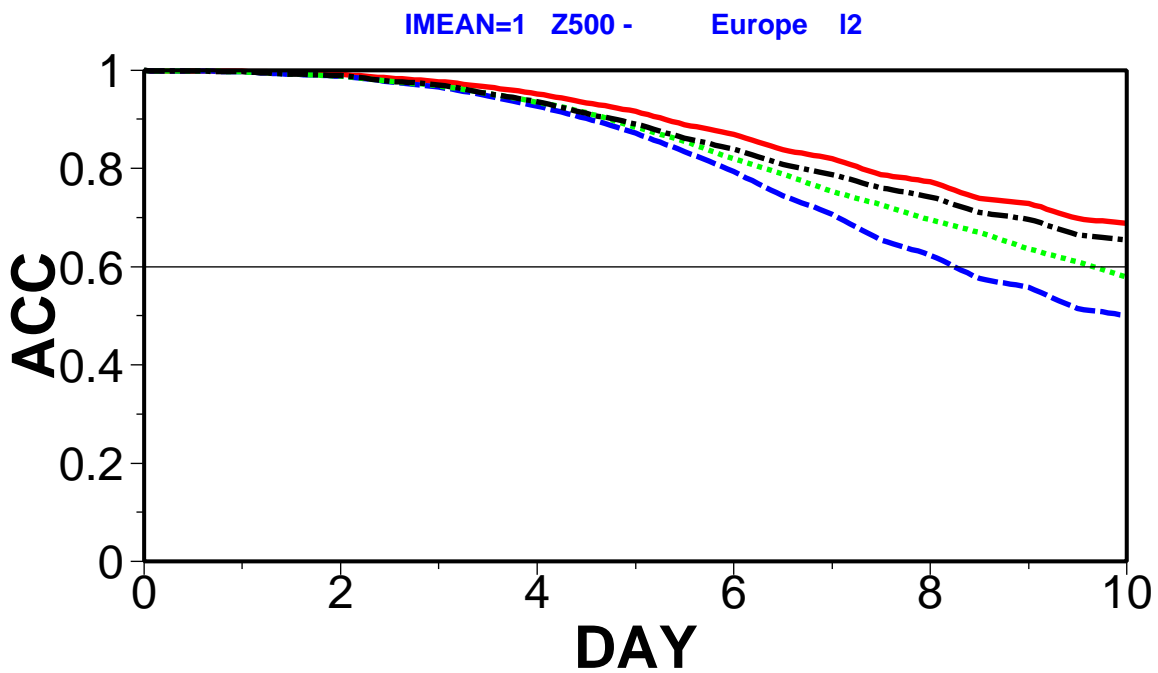


SOLID RED: skill HRES 20060501 89
DASH BLUE: skill HRES 20050501 89
DOT GREEN: skill HRES 20040501 89
CH-DAS BLACK: skill HRES 20030501 89

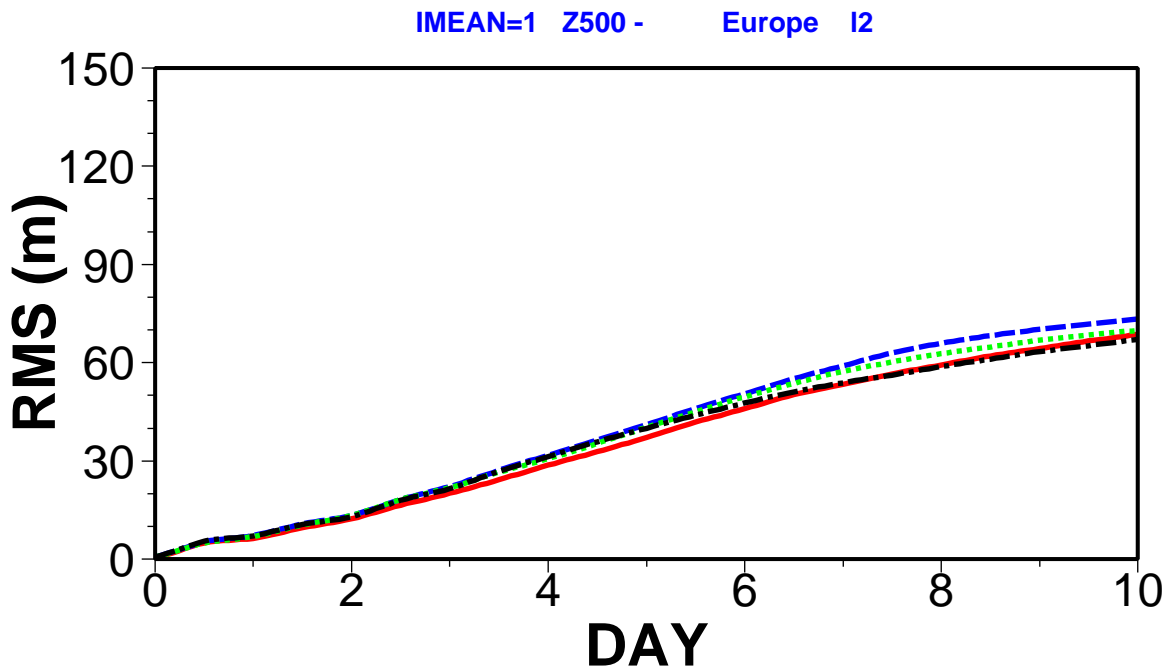
IMEAN=1 Z500 - Europe I2



SOLID RED: error HRES 20060501 89
DASH BLUE: error HRES 20050501 89
DOT GREEN: error HRES 20040501 89
CH-DAS BLACK: error HRES 20030501 89

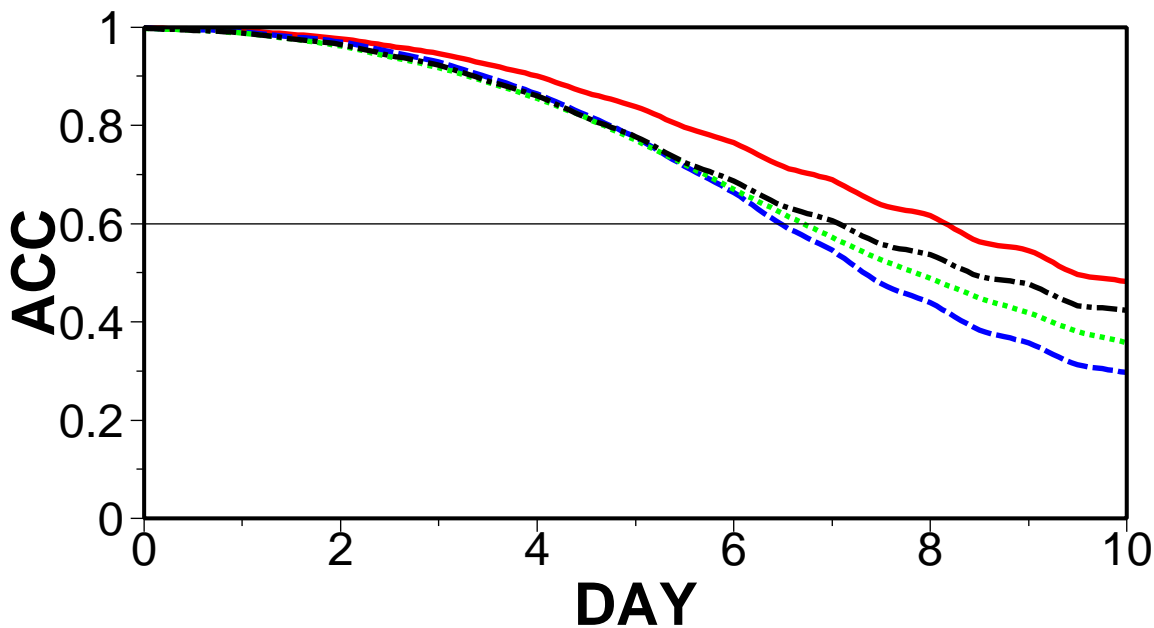


SOLID RED: skill E_M 20060501 89
 DASH BLUE: skill E_M 20050501 89
 DOT GREEN: skill E_M 20040501 89
 CH-DAS BLACK: skill E_M 20030501 89



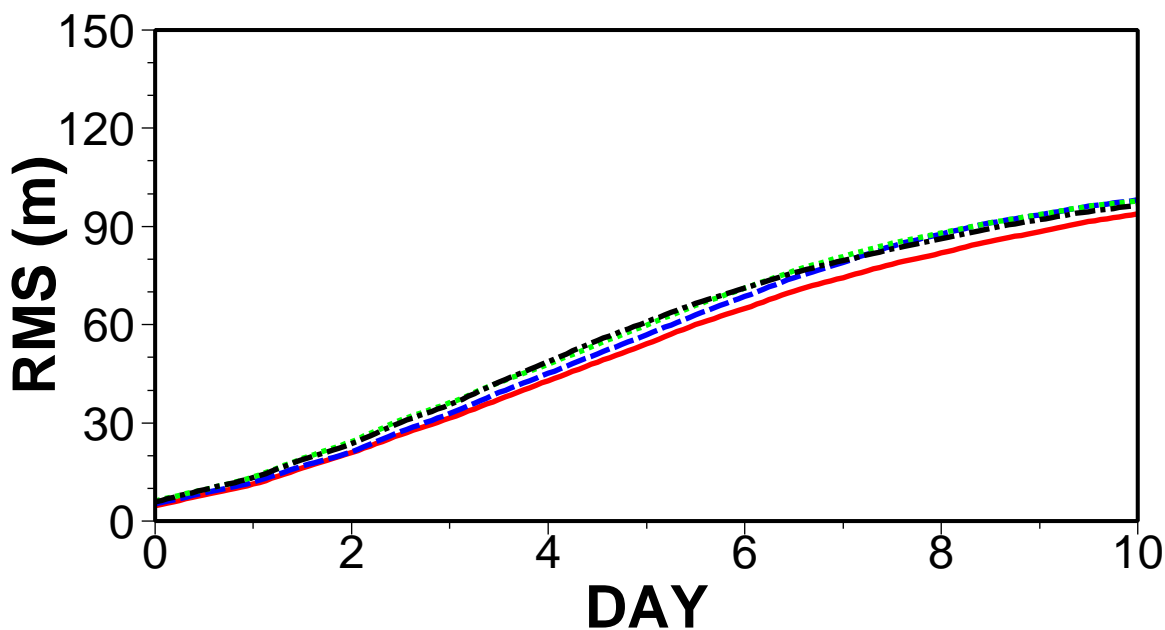
SOLID RED: error E_M 20060501 89
 DASH BLUE: error E_M 20050501 89
 DOT GREEN: error E_M 20040501 89
 CH-DAS BLACK: error E_M 20030501 89

IMEAN=1 Z500 - Europe I2



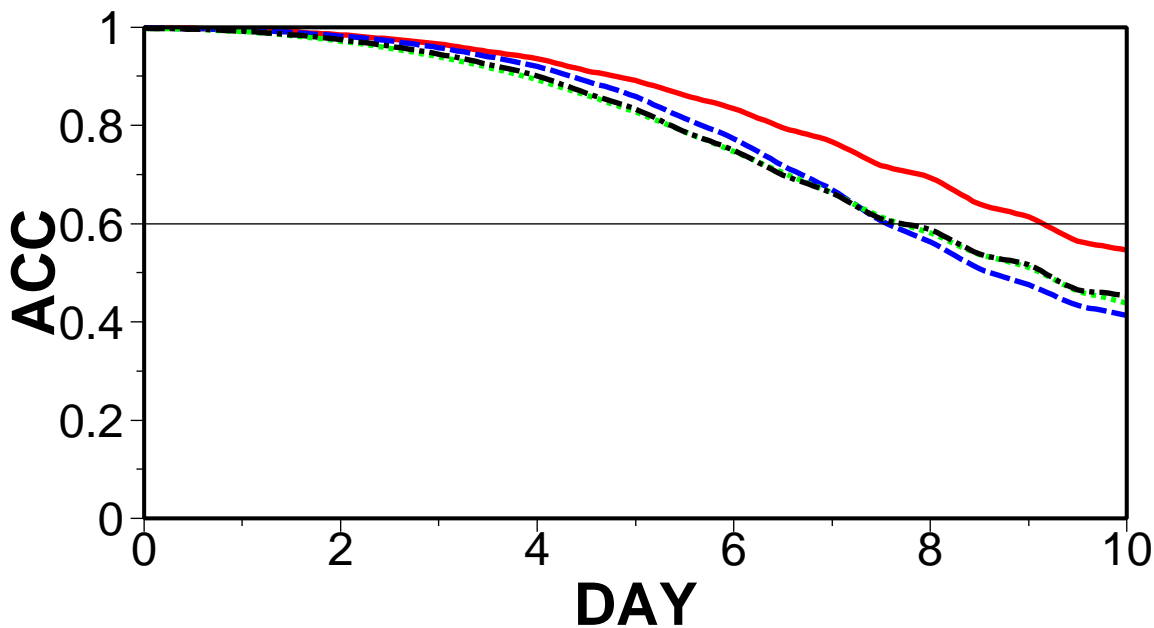
SOLID RED: mean skill 20060501 89
DASH BLUE: mean skill 20050501 89
DOT GREEN: mean skill 20040501 89
CH-DAS BLACK: mean skill 20030501 89

IMEAN=1 Z500 - Europe I2



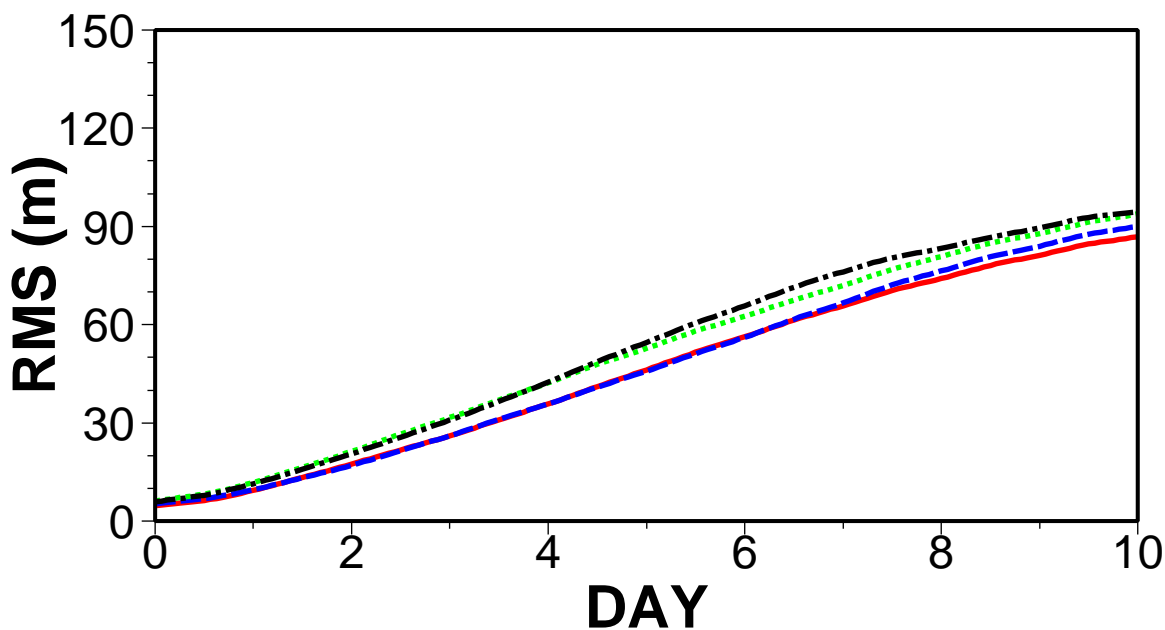
SOLID RED: mean error 20060501 89
DASH BLUE: mean error 20050501 89
DOT GREEN: mean error 20040501 89
CH-DAS BLACK: mean error 20030501 89

IMEAN=1 Z500 - Europe I2



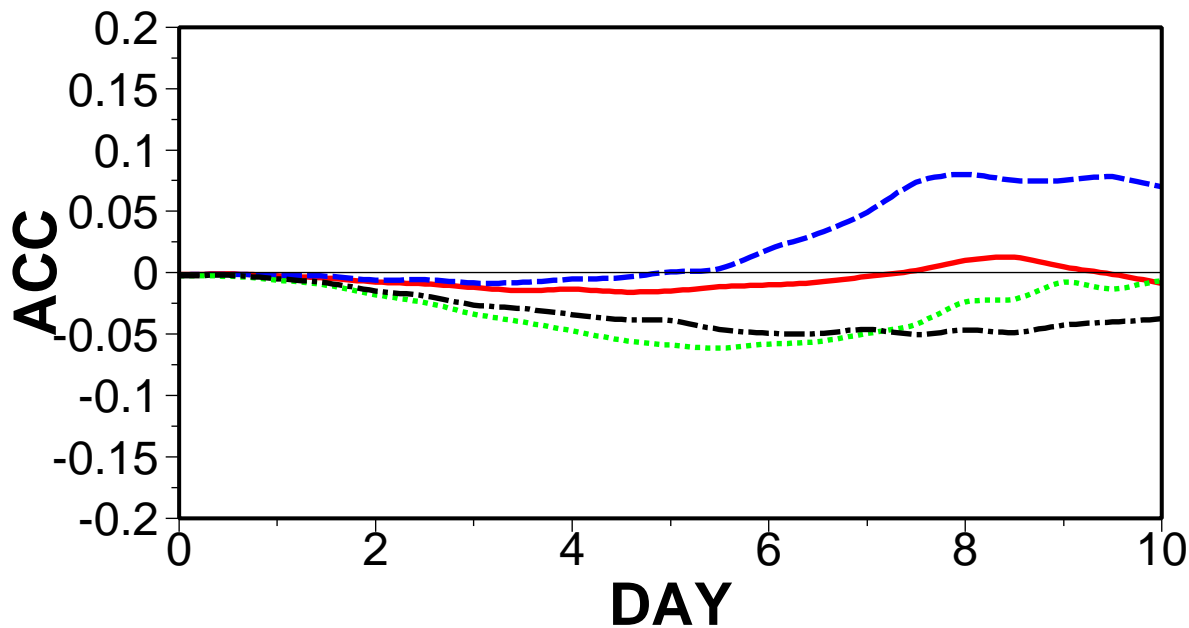
SOLID RED: M_SP C(d) 20060501 89
DASH BLUE: M_SP C(d) 20050501 89
DOT GREEN: M_SP C(d) 20040501 89
CH-DAS BLACK: M_SP C(d) 20030501 89

IMEAN=1 Z500 - Europe I2



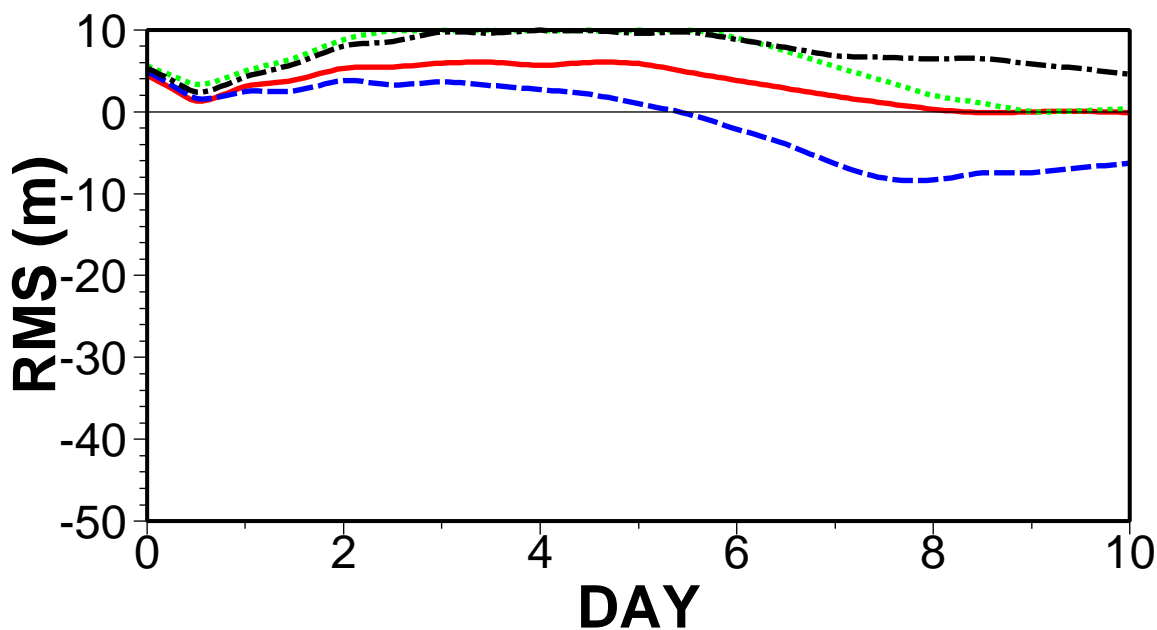
SOLID RED: M_SP C(d) 20060501 89
DASH BLUE: M_SP C(d) 20050501 89
DOT GREEN: M_SP C(d) 20040501 89
CH-DAS BLACK: M_SP C(d) 20030501 89

IMEAN=1 Z500 - Europe I2



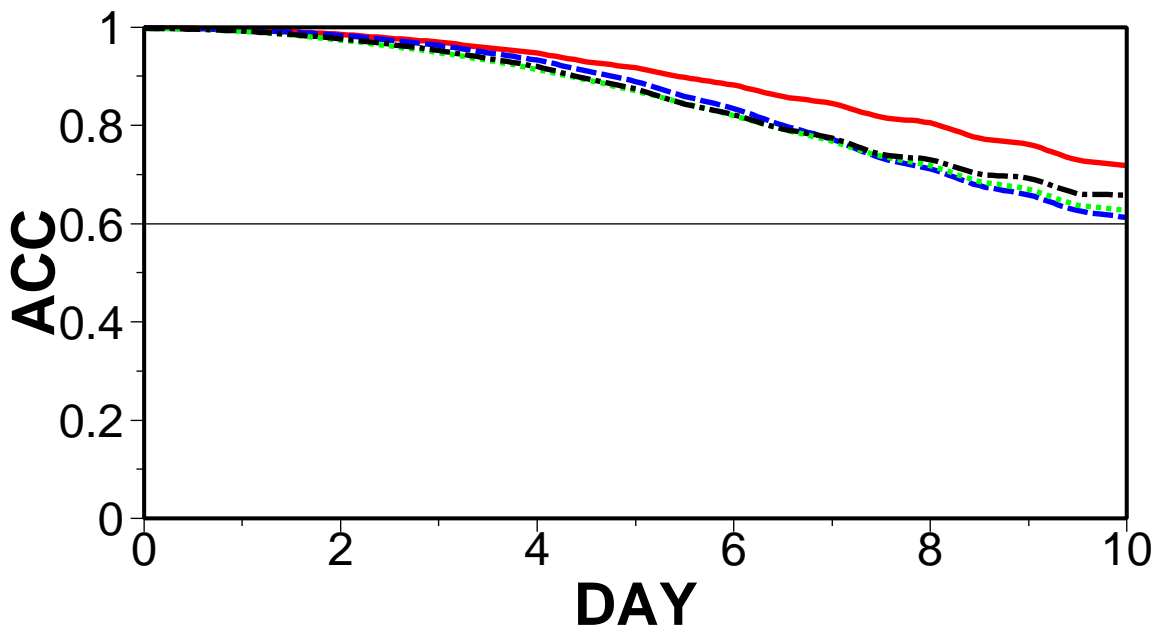
SOLID RED: [M_SP C(d)]-sk[C(d)] 20060501
DASH BLUE: [M_SP C(d)]-sk[C(d)] 20050501
DOT GREEN: [M_SP C(d)]-sk[C(d)] 20040501
CH-DASH BLACK: [M_SP C(d)]-sk[C(d)] 20030501

IMEAN=1 Z500 - Europe I2



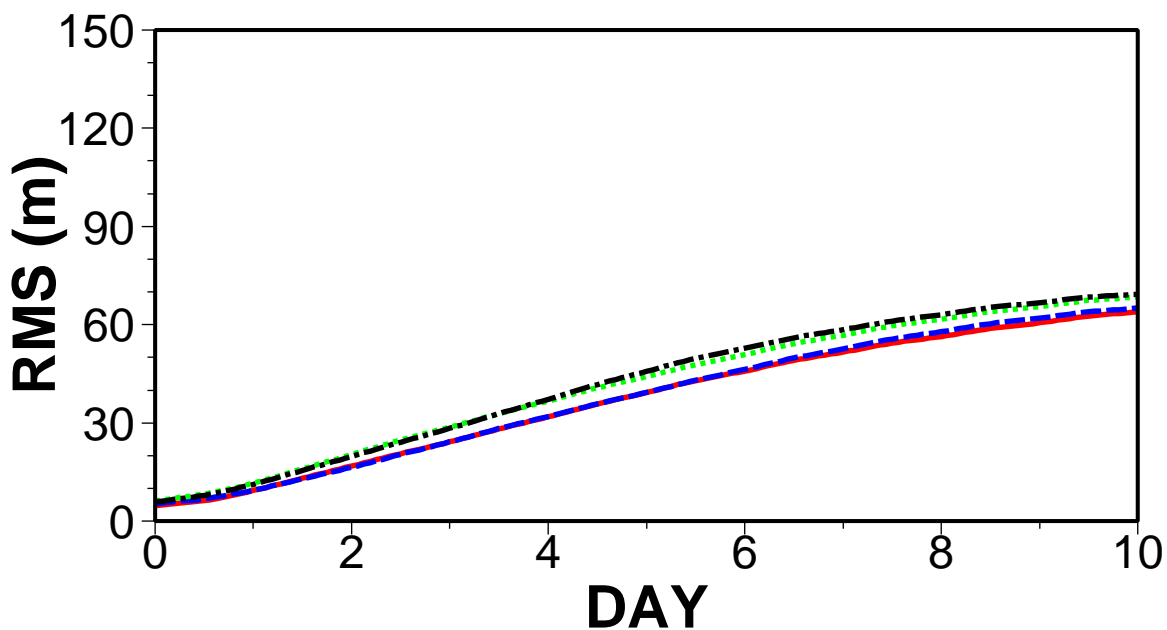
SOLID RED: [M_SP C(d)]-er[C(d)] 20060501
DASH BLUE: [M_SP C(d)]-er[C(d)] 20050501
DOT GREEN: [M_SP C(d)]-er[C(d)] 20040501
CH-DASH BLACK: [M_SP C(d)]-er[C(d)] 20030501

IMEAN=1 Z500 - Europe I2



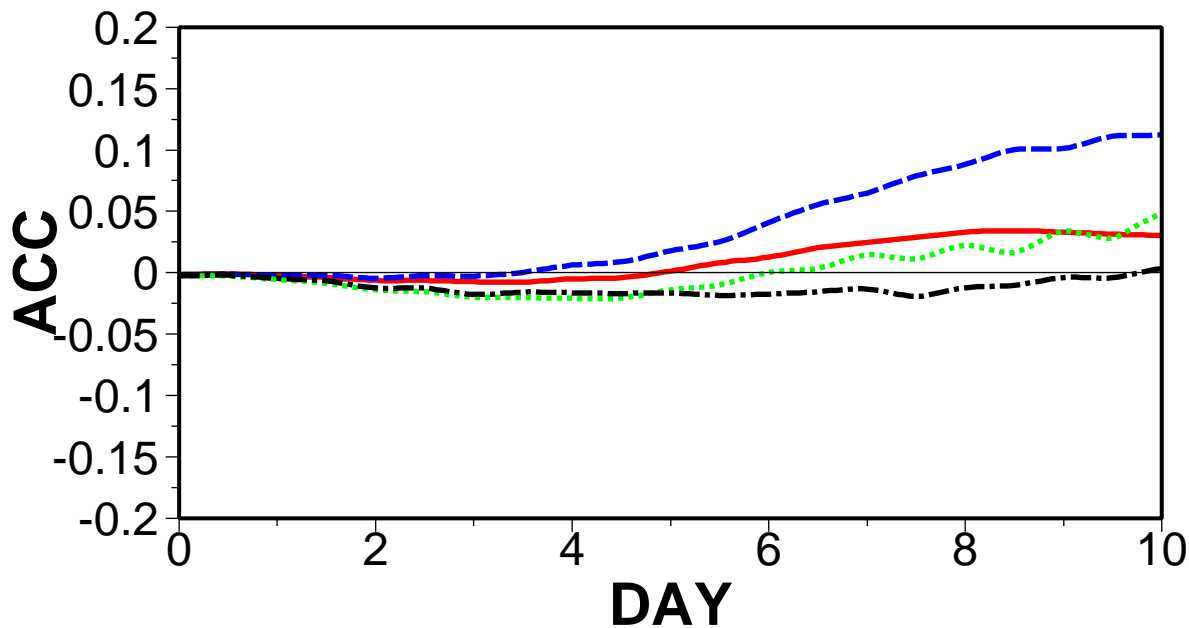
SOLID RED: M_SP E_M(d) 20060501
DASH BLUE: M_SP E_M(d) 20050501
DOT GREEN: M_SP E_M(d) 20040501
CH-DAS BLACK: M_SP E_M(d) 20030501

IMEAN=1 Z500 - Europe I2



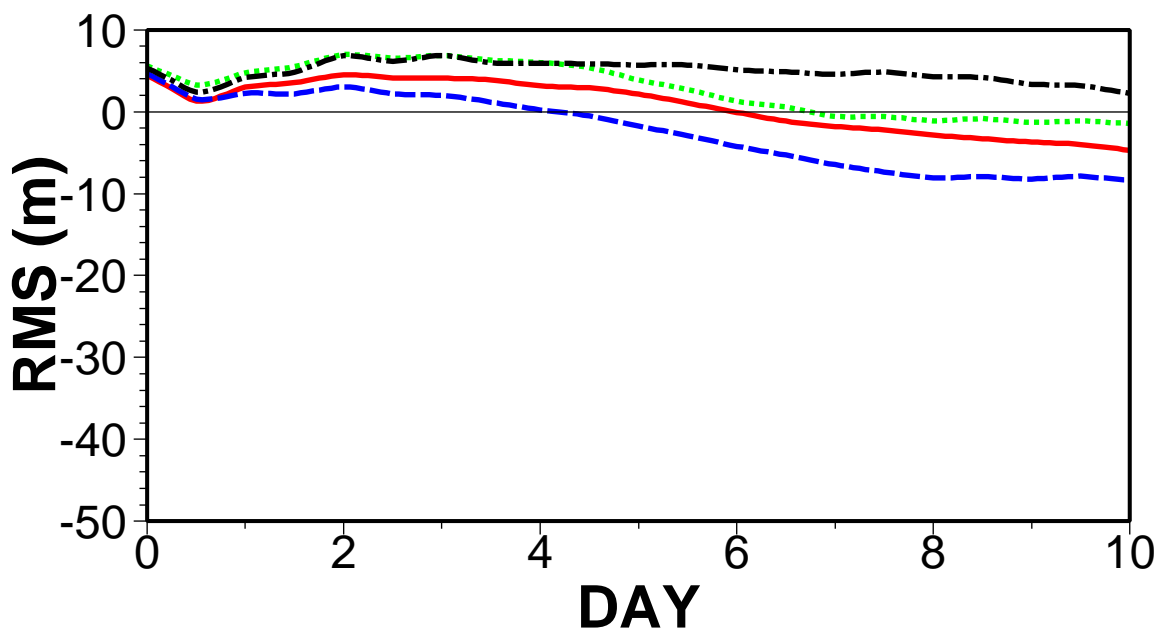
SOLID RED: M_SP E_M(d) 20060501
DASH BLUE: M_SP E_M(d) 20050501
DOT GREEN: M_SP E_M(d) 20040501
CH-DAS BLACK: M_SP E_M(d) 20030501

IMEAN=1 Z500 - Europe I2



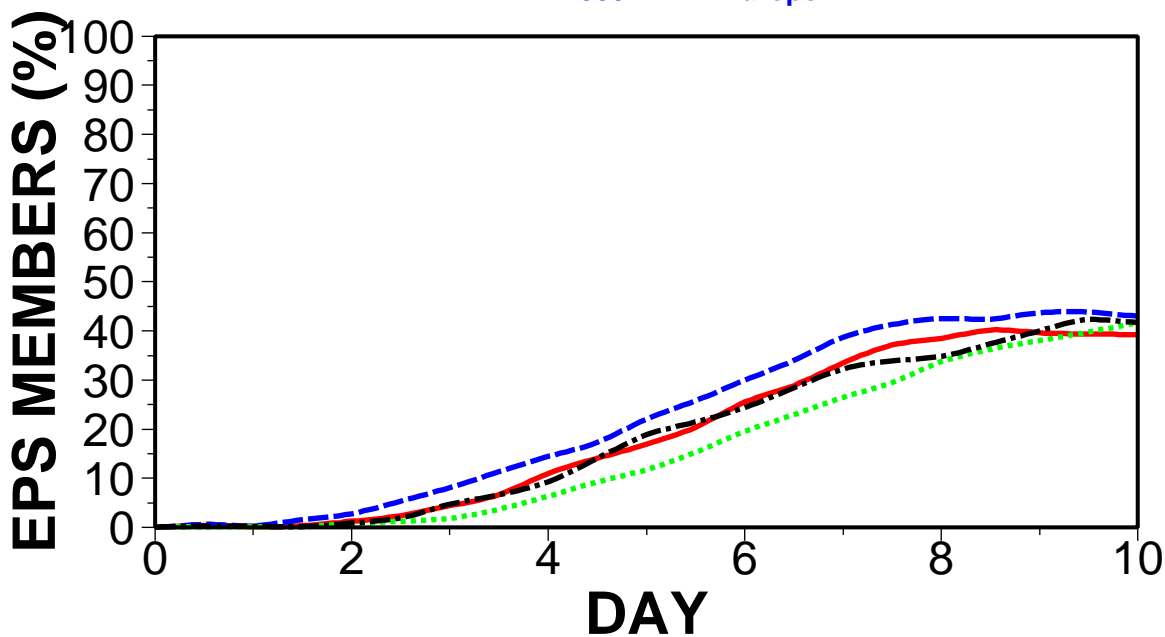
SOLID RED: [M_SP E_M(d)]-sk[E_M(d)] 20060501
DASH BLUE: [M_SP E_M(d)]-sk[E_M(d)] 20050501
DOT GREEN: [M_SP E_M(d)]-sk[E_M(d)] 20040501
CH-DASH BLACK: [M_SP E_M(d)]-sk[E_M(d)] 20030501

IMEAN=1 Z500 - Europe I2



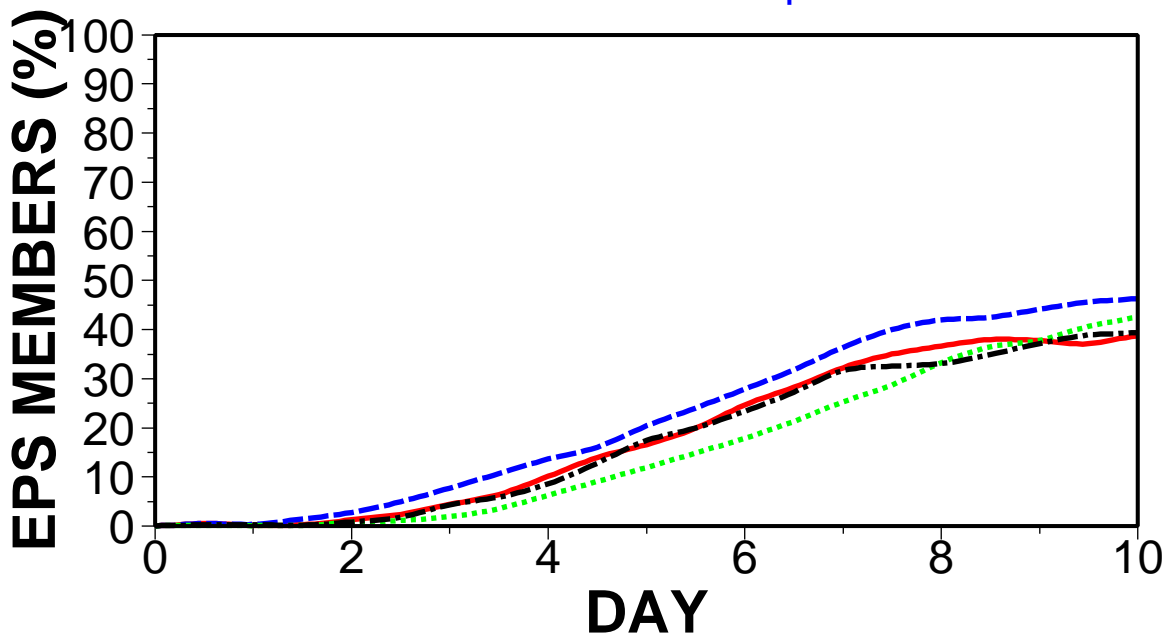
SOLID RED: [M_SP E_M(d)]-er[E_M(d)] 20060501
DASH BLUE: [M_SP E_M(d)]-er[E_M(d)] 20050501
DOT GREEN: [M_SP E_M(d)]-er[E_M(d)] 20040501
CH-DAS BLACK: [M_SP E_M(d)]-er[E_M(d)] 20030501

IMEAN=1 Z500 - Europe I2

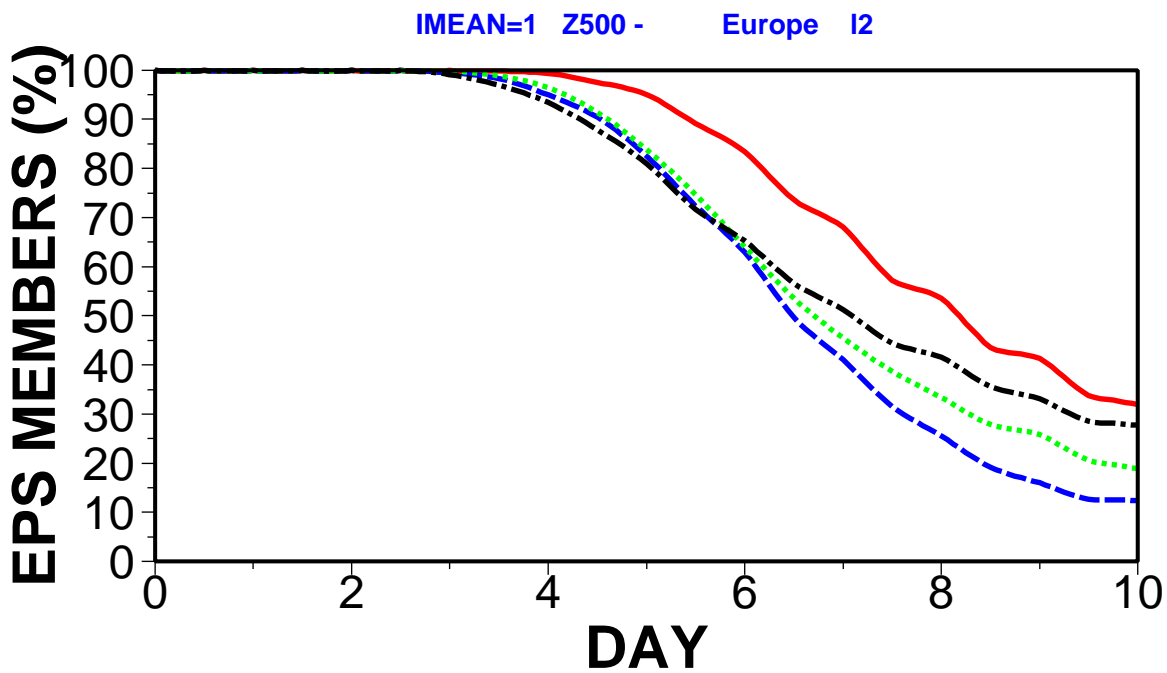


SOLID RED: %p with sk(p)=>sk(c) 20060501
DASH BLUE: %p with sk(p)=>sk(c) 20050501
DOT GREEN: %p with sk(p)=>sk(c) 20040501
CH-DAS BLACK: %p with sk(p)=>sk(c) 20030501

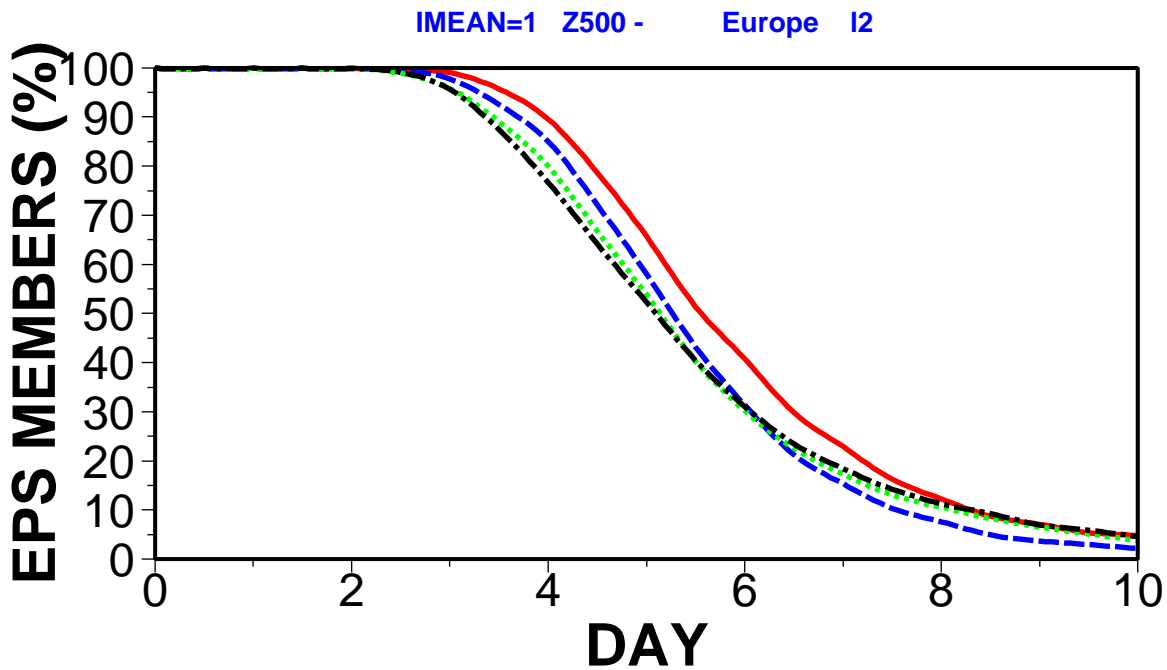
IMEAN=1 Z500 - Europe I2



SOLID RED: %p with er(p)<=er(c) 20060501
DASH BLUE: %p with er(p)<=er(c) 20050501
DOT GREEN: %p with er(p)<=er(c) 20040501
CH-DAS BLACK: %p with er(p)<=er(c) 20030501



SOLID RED: %p with sk>0.6 20060501
DASH BLUE: %p with sk>0.6 20050501
DOT GREEN: %p with sk>0.6 20040501
CH-DAS BLACK: %p with sk>0.6 20030501



SOLID RED: %p with er<56m 20060501
DASH BLUE: %p with er<56m 20050501
DOT GREEN: %p with er<56m 20040501
CH-DAS BLACK: %p with er<56m 20030501